



SUMMER 2012

THE Spruce

NEWSLETTER

P.O. Box 2276 ▪ Huntington Station ▪ Shelton, Connecticut 06484

EARTH DAY ESSAY WINNERS



The Shelton Land Conservation Trust thanks all who participated in its 2nd Annual Essay Contest - "What Earth Day in Shelton Means to Me." Winning the 1st place, \$100 Award is Selina Jose. Edward Hunt won the 2nd place \$75.00 award, and Anna Marini won the 3rd place \$50.00 prize.

Trust President, Joe Welsh presented the awards at the Trust's regular June 13th meeting. The essay winners were heartedly congratulated by Joe, and the other Trust officers, and Board members. Joe noted, "It is both gratifying, and reassuring to read the thoughts and ideas of the future stewards of our environment." Reprinted below is the 1st place winning essay, enjoy! The other winning essays are posted on our website <http://www.sheltonlandtrust.org>

"What Earth Day in Shelton Means to Me" By Selina Jose

Revolving around the Sun day in and day out, Earth is full of life and opportunity. Whether it's the sound of rivers, streams, birds or the rustling of leaves, I appreciate the planet on which I live. Being an active member of the Shelton High School Track Team as well as the Shelton High School Girls Soccer Team, it is my personal responsibility to stay fit and run at least five times per week. There is nothing more relaxing and peaceful for a long run than the trails around my neighborhood as well as the High School. Not only is it safe, but the scenery is beautiful and I take pleasure in my surroundings.

Continued on Page 2

1958 FERGUSON TRACTOR RESTORATION PROCEEDING

Ed McCreery reports that the tractor restoration is proceeding with the usual bumps in the road. When some parts came back from the blaster, the rust had been worse than thought. A crack was also discovered in the front axle support. Ed reports that a quick call to a Vermont used part supplier produced two replacement fenders off of the same model tractor along with a mounting bracket at a reasonable price. These have arrived in CT and have been blasted. All the removed parts have been sent to the painter who is in the process of matching up the 1958 colors that The Massey Ferguson tractor company used. The internet has been a wealth of information providing even a color chart



listing the original factory colors of each part. Ed and his son Conner report that all the small parts like the carburetor, starter motor, and the like are being stripped and cleaned by them and are coming out nicely. Ed spends each night in his garage cleaning 50 years of grime, paint, and rust off literally thousands of nuts, bolts and washers in the hope of re-using many of them to save money on the restoration. The last big preparation job will be wire brushing the chassis frame to remove the old paint. Finally Ed reports that he will soon be placing the last order for parts to include a complete engine gasket set

Continued on Page 2

Earth Day Continued

In eighth grade, I was shown a video on how pollution and garbage are depleting the ozone layer and harming our world. I began to take the matter seriously and realized that without our planet and trees and all the things that make nature work, we would not be living. Many people go about their busy schedules, trying to relieve stress by finishing their daily to-do-lists; however, I do my best to execute small actions that help the planet keep on turning. Some of these include; turning the faucet off while brushing my teeth, recycling properly, and washing large loads when I do my laundry. In addition, the step that is most vital in my life is picking up trash left behind on the trails where I run. I dislike the idea of others throwing their garbage on the ground when, in turn, they are surprisingly hurting themselves. Yes, going green is beneficial, yet littering and other things impede the progress. Despite the fact that many do not partake in going green or even recycling, I have the benefit of feeling a sense of accomplishment when I take small steps like these. In my own way I feel I have saved the planet.

So what is Earth Day? Earth Day is a day dedicated to spreading knowledge, appreciation, and a caring attitude. It is a day to help others realize how precious and unique our planet and the environment in which we live truly are. We must help others to realize that everyone can do their part in taking a stand for our planet. We have a

PROGRESS ON THE BUSHINSKI BEQUEST

After years of delay in probate, we can finally report some progress on this property. This four acre property at the intersection of Huntington Street and Shelton Road right on the Trumbull border includes a pond and mature tree specimens. It was left to the Land Trust on the condition we maintain the house. An agreement was worked out in the Probate Court that the Land trust would accept the property as open space only if the estate took care of the leaky oil tank and removed the house. Many of you may have noticed a dirt pile growing over the last year in front of the house as crews sought to remove soil impacted by the oil tank. Finally, this June, those soils have been removed and properly disposed of and the hole filled in with clean soil. The attorney for the estate is now arranging for utilities such as water to be disconnected and will then bring in a demolition

responsibility to ourselves, to each other, and to our home, as well as the millions of forms of life that exist on it. Out of all the planets known to us, life exists on one. For this reason, we must strive to take better care of it, to preserve this rare and unique place, where life can not only blossom, but grow and flourish. The late Carl Sagan explains this duty in his book, *Pale Blue Dot* : “The Earth... that’s home. That’s us. On it everyone you love, everyone you know, everyone you ever heard of, every human being who ever was - lived out their lives.... The Earth is a very small stage in a vast cosmic arena... In our obscurity, in all this vastness, there is no hint that help will come from elsewhere to save us from ourselves. The Earth is the only world known so far to harbor life... the Earth is where we make our stand... It underscores our responsibility to deal more kindly with one another, and to preserve and cherish the pale blue dot, the only home we’ve ever known.” (Carl Sagan, *Pale Blue Dot*, 1994)

The Earth is our only home, our only safe haven. That is why we must appreciate it. That is why I do my part in keeping it clean. It is only logical that we should work to save the Earth, the home that has kept us safe for so long. It gives me the blessing of life. It allows me to go on runs, to breathe clean air, to brush my teeth, and to simply live my life. That is what Earth Day means to me. It means giving back to the home that has given us all everything.

contractor to remove the house. Hopefully by the end of this summer, the Land Trust will have a nice 4 acre parcel to add to its inventory which will make an inviting pocket park at one of the main entrances to our City.

Tractor continued

and other misc. parts needed for the rebuild The Land Trust continues to seek donations to cover the cost of the replacement parts, both old and new, the cost of the blasting and the cost of the painting. Donations may be made to the Shelton Land Trust (attention Tractor restoration Fund) and mailed to:

Shelton Land Conservation Trust
PO Box 2276 Huntington Station
Shelton, CT 06484

A Big Thank You to all who have contributed!

Shelton Clean Sweep 2012

The Trust participated in the city-wide 5th Annual Clean Sweep, during Earth-Day week, April 22 - April 29th. Ten volunteers met at the Trust's Nicholdale Farm to clear trash along Rt 110 and Nicholdale Brook. The group picked up 17 bags of trash along the roadside, and two additional bags along the brook. Their work and dedication were part of a greater volunteer effort that included hundreds of community volunteers that cleaned up around the City.

Recognition of these good deeds were acknowledged by the Anti-Litter Committee at a Clean Sweep Recognition event with Mayor Lauretti held in May at the City Hall Auditorium. Certificates recognizing volunteers who helped with the effort were awarded, along with a "Clean Sweep 2012" patch, which was a hit with the many scouts groups that volunteered. There were also refreshments and door prizes.



Mayor Lauretti presented a "Certificate of Appreciation" to Trust President Joe Welsh who accepted it on behalf of the Trust. Several groups were awarded a special volunteer of the year award which included the following 4 categories and honorees:

Business: Electri-Cable Assemblies (ECA) – Civic Group: Boy Scout Troop 28 – Individual or Family: The Spillane Family -- Mount Trashmore Award: Cub Scout Pack 27

There was also a special thanks to the Housatonic River Cleanup, Inc. The organization's 300+ volunteers removed 12 tons of litter from the banks of the Housatonic River in Shelton, 8 tons in Milford, and 35 tons in Stratford. Altogether, a total of 55 tons!

The Land Trust is very appreciative of, and greatly encouraged by the strong showing of community volunteer support. Their dedication and efforts not only help to make our City a better place in which to live now, but also holds out the promise for a brighter and more litter-free future. The Trust salutes them all, especially those younger volunteers who will be the next generation of land stewards. For more on the anti-litter committee visit www.donttrashshelton.org



Membership Chairperson(s) Needed

In anticipation of a vacancy in one of its most important positions, that of Membership Chairman, the Trust is appealing to its membership base, for a volunteer(s) to take on the duties and responsibilities of the Membership Chair. Among other things, the position is responsible for maintaining the membership roster, the annual mailing of dues renewals, periodic mailing labels, and for organizing and participating in any other membership events and activities. Computer skill with word processing, spreadsheet, and email applications, while desirable, is not necessarily required.

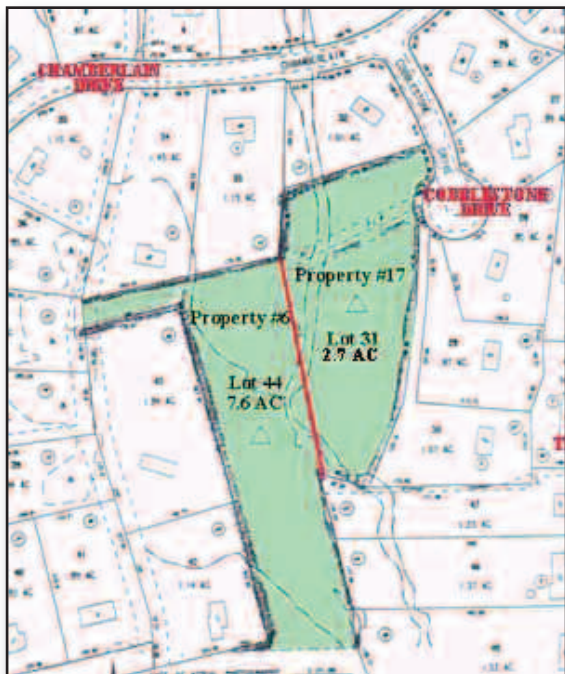
At the Board's February meeting, current co-Chairs Pat and Rudy Gajdosik announced their intention to step down after

having served for some half-dozen years. "The Trust is indeed fortunate to have had Pat and Rudy oversee the membership activities over this time period," says Trust President Joe Welsh. "They not only executed their responsibilities with enthusiasm, efficiency, and thoroughness, but also contributed their time and talents, in so many of the other Trust activities," he continued. "Although," he noted, "they are relinquishing their Membership responsibilities, we look forward to their continued participation in Trust affairs."

If you are interested in becoming more active with the Trust, or would like more information about the Membership Chair, please contact Trust President Joe Welsh – 203 0768, Secretary Mary Jane Liddel 203 7269, or any of the other Board members that you may personally know. No experience is required. The Board has experienced members willing to assist and guide you as needed.

Getting to know our parcels:

Shelton Land Conservation Trust Parcels #6 and #17



The City of Shelton has labeled both of these parcels LT 20, even though they are separate, and were acquired from different grantors. Parcel No. 6 is located at the end of Tulip Lane, which is a short cul de sac off Chamberlain Drive. The adjoining Parcel No.17 is located off Cobblestone Drive, which is another dead end street around the corner, off Chamberlain Drive. Parcel No. 6, was deeded to the Shelton Land Conservation Trust, Inc. by Louise A. Chamberlain in October of 1978 and Parcel No. 17 was is deeded to the trust by the City of Shelton in January of 1986. Both parcels are part of the Subdivision known as 'Field Stone Acres'. Parcel No. 6 is part of Section Five, while Parcel 17 is part of Section Four.

The two parcels are divided by Means Brook. The Tulip Lane parcel contains two smaller watercourses, which feed the brook. Each parcel must be

accessed from either street and crossing the brook is not advisable. The land off Cobblestone Drive contains a 20' wide Storm Drain Easement which handles the runoff from the neighboring streets. Being 2.7 Acres, Parcel No.17 does not have any long trails, but does offer access to the brook. Parcel No.6 is over 7 Acres, and Means Brook borders the property on both the South and the East. There is a Water Company Easement along the westerly side of the property. Both parcels are almost entirely designated as Wetlands by the City Wetlands Agency. These Parcels serve as important pieces of the Shelton Land Conservation Trust, and in the protection of wetlands and Means Brook.

We're on FACEBOOK!



Please "like" our page and you can keep informed about upcoming events and Land Trust news. Search Shelton Land Trust.

Shelton Land Conservation Trust, Inc.

P.O. Box 2276 • Huntington Station • Shelton, Connecticut 06484

President

Joseph Welsh

Vice Presidents

Philip Jones

Edward McCreery

Secretary

Mary Jane Liddel

Treasurer

Paul Uhrynowski

Board Members

Robert Carreau

Marge Estok

Pat Gajdosik

Rudy Gajdosik

Evelyn Healy

Hank Lauriat

Jackie Lauriat

Robert Liddel

Bruce Nichols

Margaret Paulson

Joseph Palmucci

Donald Pendagast

Robert Wnek

Have you paid
your 2012 dues
yet?

2012 General Meetings:

9/12

11/14

Additional meetings to be announced. All general meetings will take place at the Shelton Community Center at 7pm.

To be better informed about Land Trust activities and local conservation issues, why not join the Trust's email alert list? To be added, simply send an email to slctjoew@sbcglobal.net

