



THE Spruce

FALL 2013 NEWSLETTER

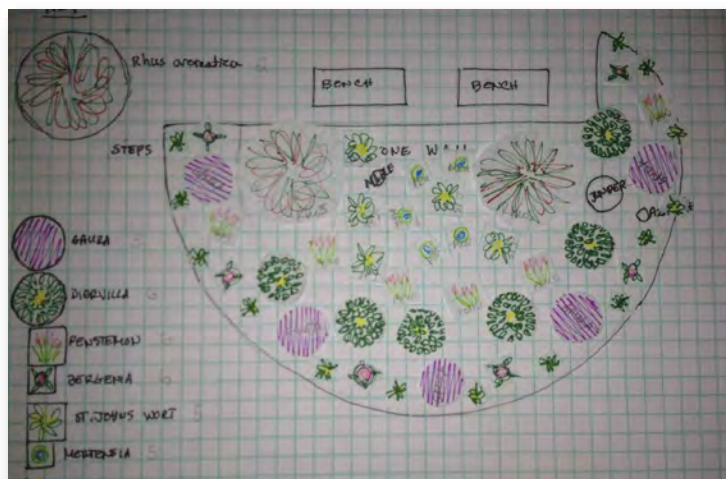
P.O. Box 2276 ■ Huntington Station ■ Shelton, Connecticut 06484



Libby, Mary, and Pat next to the garden



Located on Bridgeport Ave near exit 11 off route 8



The scheme of it all!

Bushinsky Progress

Land Trust President Joe Welsh and a handful of volunteers have been working with Master Gardener Libby Root, to enhance the attractiveness of the “Bushinsky Arboretum” on Bridgeport Ave. just West of Huntington Rd. The park-like parcel, that includes two ponds, was bequeathed to the Land Trust by the late Edward Bushinsky. A formal dedication ceremony acknowledging the donation, and honoring Mr. Bushinsky was held this past May. A sign erected by the Trust is easily visible from Bridgeport Ave.

To make the parcel even more appealing, the work party marked out an area to be planted, followed by an herbicide-free method of killing the weeds. The volunteers then removed rocks from the area, and amended the soil with 25 pounds of 10-10-10 fertilizer and about 150 pounds of lime. That was followed by leveling out, and raking a load of compost soil generously left there by Hilltop Nursery owner and former Trust Board Member Randy Szkola. Randy also installed several logs to define and limit the parking area, and also loosened up the area, above the wall, with his machine to facilitate landscaping of the area.

A day, or so later, Welsh picked up two benches that are to be installed above, and just below the wall. The bench below the wall was temporarily set up to get an idea of how it will look when work is completed. Additional work and volunteers will be needed to level and install a rock path, edging the beds, and picking up rocks that were raked out onto the grass. Then the “fun part,” of planting the new shrubs and plants will complete the current project.

If you have a little time, stop by and check it out, it's well worth the visit.

Trust Members Run for the Woods

On a sunny September Saturday morning, Trust members Joe Welsh, and Bruce Nichols headed to Burlington, Connecticut and ran for the woods. The event was a fundraiser for Connecticut Forest and Parks Association (CFPA) at Sessions Woods Wildlife Management Area.

Before the race folks were able to visit the nature center to learn about wildlife, and wildlife habitat. Welsh noted, “It is definitely worth a trip with the family to visit the center, and explore the trails at a slower pace.”

The Run for the Woods event included a 5k Walk, 5k Run, and a 10k Run, all on the trails of the park. People were invited to participate as either a walker, or runner to raise funds for CFPA trails. Nichols ran the 10K, and Welsh the 5K. Both Trust members made good time, and were happy to support the work of Connecticut forest and parks.

Sessions Woods WMA is located on Route 69, about three miles south of Route 4 in Burlington, and three miles north of Route 6 in Bristol.

Will Your Rep and Senators Save the Easement Incentive?

Tax Update: September 11, 2013

Our top legislative priority this year is to prevent the enhanced tax incentive for conservation easement donations from expiring on December 31! That's scarcely 100 days to save an incentive that has increased the pace of conservation by a third nationwide.

Please ask your representative and both senators to co-sponsor new legislation in the 113th Congress to make the easement incentive permanent:

- Urge Representatives to co-sponsor the Conservation Easement Incentive Act, H.R. 2807, introduced by Reps. Jim Gerlach (R-PA), Mike Thompson (D-CA), and 135 of their colleagues. Your Rep. can sign on by contacting Lori Prater in Rep. Gerlach's office at 5-4315 or Carla McNeill in Rep. Thompson's office at 5-3311.

- Urge Senators to co-sponsor the Rural Heritage Conservation Extension Act, S. 526, introduced by Senators Max Baucus (D-MT) and Orrin Hatch (R-UT). They can sign on by contacting Tiffany Smith or Preston Rutledge of the Finance Committee at 4-4515.

We encourage you to call first (switchboard: 202-224-3121), speak with your legislators' tax staffers, then ask for their email addresses to follow-up with additional materials and local anecdotes. Visit <http://www.landtrustalliance.org/policy/tax-matters/campaigns/how-you-can-help> for fact sheets and talking points, including new House and Senate coalition letters signed by 64 agriculture, conservation and sporting organizations.

While you're on the line, please consider inviting the staffer and/or their boss to come see your work in action the next time they are in the district, or ask to schedule a meeting in their district offices – that's how real relationships get off the ground.

Please do keep us apprised of how your calls are going and let me know if you need any additional information.

Many thanks.

Russ Shay

Director of Public Policy | Land Trust Alliance

1660 L St NW, Suite 1100 | Washington, DC 20036

202-800-2230 | rshay@lta.org

Shelton Farmer Serves on Statewide Agricultural Group

Fred Monahan of Stone Gardens Farm plays role in agricultural initiatives

By Shelton Herald on August 28, 2013

Fred Monahan, owner and grower at Stone Gardens Farm in Shelton, has been invited to be a part of one of the working groups developed for the Governor's Council for Agricultural Development, a state advisory board led by Agricultural Commissioner Steven K. Reviczky.



The council, which was reorganized in 2011 after legislation was passed to revive the group, is charged with making recommendations to the state Department of Agriculture on ways to increase spending by Connecticut residents on locally grown produce and farm products.

Unique approach: Freezing, canning produce

Monahan was asked to serve on the council's working group due to the success at Stone Gardens Farm in their processing of fresh produce in the summer to be consumed later in the year.

"We are one of the only farms in the state that started freezing some of our summer produce and offering it to consumers," Monahan said. "There is definitely an interest out there, and it's good to encourage other farmers to process

their stuff too."

Stone Gardens also began processing their tomatoes and peppers last year into jarred sauce and salsa, which is sold at their farmstand and a few other locations.

"Processing in the summer allows you to be able to offer your product year-round," Monahan said. "Through processing, we can eventually get more Connecticut-grown products into institutions, like schools and hospitals."

Began the Shelton farm in 1998

For Fred and Stacia Monahan, growing real food for real people is not just a business, but a true passion, according to their website.

The Monahans grow 50 acres of vegetables annually and raise poultry, pork and beef at Stone Gardens Farm, 83 Saw Mill City Road, Shelton.

The couple founded the farm in 1998, after expanding from a roadside vegetable stand where they sold vegetables and flowers at Shelton's Dairy on Birdseye Road in Shelton. The couple steadily grew their business, planting more varieties of vegetables on mostly leased land.

Stone Gardens also operates a community supported agriculture (CSA) program, where customers pay for a share of the farm's produce harvest at the beginning of the year in exchange for a weekly box of veggies throughout the growing season.

Some of the vegetables grown on the farm are beets, bok choy, carrots, eggplant, garlic, greens, peppers, potatoes, radishes, squash, sweet corn, sweet potatoes, tomatoes, turnips and winter squash.

The Stone Gardens Farm stand is open daily 10 a.m. to 6 p.m. from May to Thanksgiving.

For information on Stone Gardens Farm, go to www.stonegardensfarm.com or email stonegds@comcast.net.



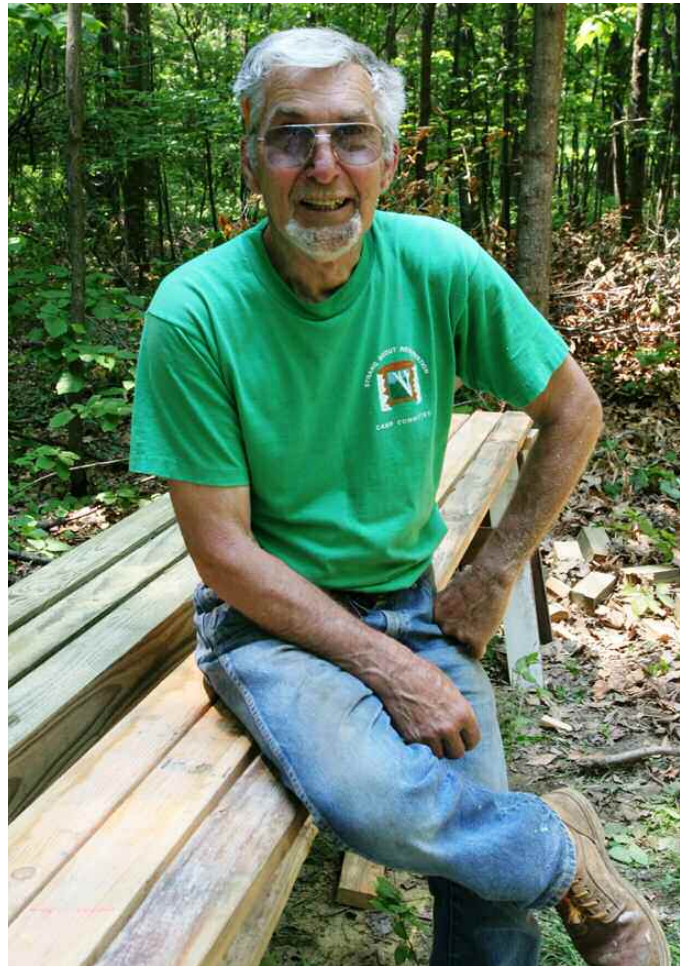
Fred, Stacia, Billy, Tommy and Sophie Monahan



Rudy J. Gajdosik Jr.

The Shelton Land Conservation Trust is deeply saddened to report the passing of Board Member, and very active land steward Rudy J. Gajdosik, Jr. Rudy who was 79, passed away at home on August 28, 2013, surrounded by his loving family. Rudy was born in Bridgeport, CT on March 26, 1934. He grew up in the Pine Rock Park area of Shelton, CT. Rudy is survived by his wife Patricia, also a Board member of the Trust, and the Chair of the Membership Committee.

In addition to his wife, Pat, Rudy is also survived by his sons, Michael and Peter; daughter, Laurie; stepchildren, Jeff Stone, Sandy Brassard, and Nancy Yeager; his sister Judith Fitol; and 9 grandchildren. He was pre-deceased by his parents Irene (Rovack) and Rudolph Gajdosik, his son Mark, and his sister Maryann Klimovich.



his honor. Rudy also received the BSA's Silver Beaver Award in 1997 and was a Vigil member of the Order of the Arrow.

On Sunday September 8th, Rudy's family, and a great many friends and acquaintances gathered at Camp Strang, in Goshen to honor his memory, and to pay tribute to a very special man that enriched the lives of everyone that knew him, and who worked so tirelessly on behalf of Scouting, the Land Trust, and the community in general. God speed Rudy!

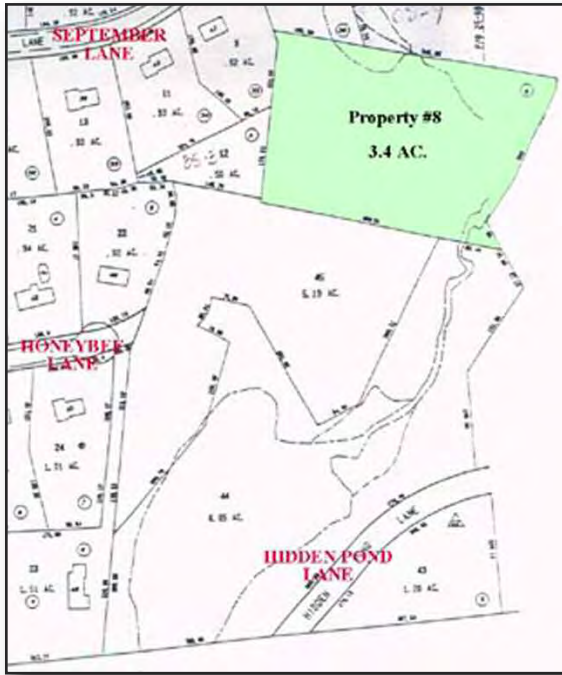
In addition to being active with the Land Trust, Rudy had a life-long connection with Scouting, beginning in 1945 when he joined the Sea Scout Troop based at the old Pine Rock firehouse. As his children grew, and joined Scouting, Rudy became active again as a leader, serving Cub Pack 25 as Cubmaster and Boy Scout Troop 25 as Scoutmaster, and also acting as an adviser for Explorer Post 25. He was also active with Girl Scout Troop 1. Rudy served on the Housatonic Council Properties Committee as chairman and chief builder, volunteering countless hours at the Council's Camp Strang, in Goshen, CT, his home away from home. In 2001 Rudy worked for the summer as Camp Director. In 2012 he was presented with the first annual Camp Strang Alumni Award which was named in



Getting to know our parcels:

Shelton Land Conservation Trust

Parcel #8



The City of Shelton has labeled this parcel LT 1, and the Land Trust knows it as Parcel #8. It is located off September Lane.

The parcel is a 3.4 acre piece of property known as Parcel "B" on the subdivision map entitled "Honey Hill" prepared in 1974, and on file in the Shelton Land Records. Access to the parcel is through another open space parcel off of Honeybee Lane or through another Open Space parcel on Nichols Avenue. The parcel was granted by the City of Shelton to the Land Trust on January 26, 1979.

There are two watercourses which run through the property

and feed into wetlands off Hidden Pond Road. There are no defined hiking trails on the property, but it serves as a valuable Land Trust property, which abuts two other parcels of Open Space to the south and on the east.

Would you like to become a land monitor? It's easy and rewarding. Just send a quick email to Bob Liddel:

rliddel@aol.com

We're on FACEBOOK!



Please "like" our page and you can keep informed about upcoming events and Land Trust news. Search Shelton Land Trust.

Shelton Land Conservation Trust, Inc.

P.O. Box 2276 • Huntington Station • Shelton, Connecticut 06484

President

Joseph Welsh

Vice Presidents

Philip Jones

Edward McCreery

Secretary

Mary Jane Liddel

Treasurer

Paul Uhrynowski

Board Members

Robert Carreau

Marge Estok

Pat Gajdosik

Evelyn Healy

Hank Lauriat

Jackie Lauriat

Robert Liddel

Bruce Nichols

Margaret Paulson

Joseph Palmucci

Donald Pendagast

Robert Wnek

**Have you paid
your 2013 dues
yet?**

2013 General Meetings:

Nov 13th WED

Additional meetings to be announced. All general meetings will take place at the Shelton Community Center at 7pm.

To be better informed about Land Trust activities and local conservation issues, why not join the Trust's email alert list?

To be added, simply send an email to slctjoew@sbcglobal.net

